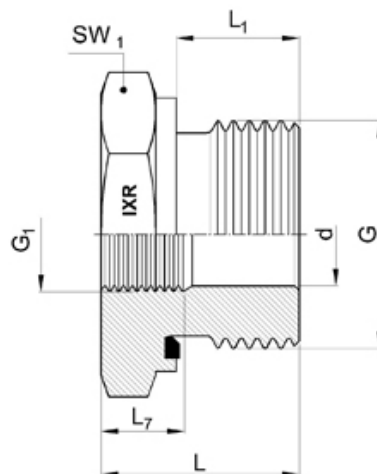


AUX21..WD - RIDUZIONE ESAG. M/F GAS CIL - WD



Descrizione:

Attacco Maschio: Tenuta Con Elastomero ISO 1179-2

Guarnizione: FKM

Filettatura: Gas Cilindrica UNI/ISO 228

Vedi anche codice AUX22..WD

Caratteristiche tecniche:

Codice di ordinazione	G	G1	L	L1	L7	d	SW1
AUX2101-WD	3/8"	1/8"	22.5	12	8	8	22
AUX2102-WD	1/2"	1/8"	24	14	8	8	27
AUX2103-WD	1/2"	1/4"	24	14	12	12	27
AUX2120-WD	3/4"	1/8"	26	16	8	9	32
AUX2104-WD	3/4"	1/4"	26	16	12	12	32
AUX2105-WD	3/4"	3/8"	26	16	13	15	32
AUX2106-WD	1"	1/4"	29	18	12	12	41
AUX2107-WD	1"	3/8"	29	18	12	15	41
AUX2108-WD	1"	1/2"	29	18	14	19	41
AUX2118-WD	1.1/4"	3/8"	32	20	17	15	50
AUX2109-WD	1.1/4"	1/2"	32	20	14	19	50
AUX2110-WD	1.1/4"	3/4"	32	20	16	24.5	50
AUX2111-WD	1.1/2"	1/2"	36	22	14	19	55
AUX2112-WD	1.1/2"	3/4"	36	22	16	24.5	55
AUX2113-WD	1.1/2"	1"	36	22	18	30.6	55
AUX2119-WD	2"	1/2"	41.5	22.5	16	19	70
AUX2114-WD	2"	3/4"	42	22.5	16	24.5	70
AUX2115-WD	2"	1"	42	22.5	18.5	30.6	70
AUX2116-WD	2"	1.1/4"	42	22.5	18.5	39.5	70
AUX2117-WD	2"	1.1/2"	42	22.5	18.5	46.2	70