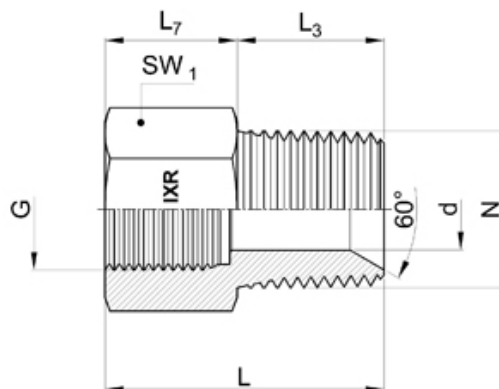
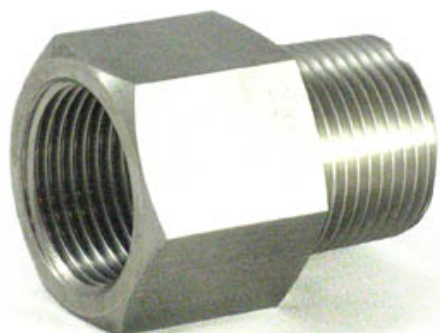


AUX68.. - ADATTATORE ESAG. M/F NPT X GAS CIL



Descrizione:

Attacchi: Maschio/Femmina

Filettatura 1: NPT - ASME

B.1.20.2M-2006

Filettatura 2: Gas Cilindrica UNI/ISO

228

Caratteristiche tecniche:

Codice di ordinazione	N	G	L	L3	L7	d	SW1
AUX68-1818	1/8"	1/8"	25	10	12	4	14
AUX68-1814	1/8"	1/4"	30	10	17	4	19
AUX68-1414	1/4"	1/4"	34	15	17	6	19
AUX68-1418	1/4"	1/8"	30	15	12	6	14
AUX68-1438	1/4"	3/8"	35	15	17	6	24
AUX68-1412	1/4"	1/2"	36.5	15	20	5	27
AUX68-3838	3/8"	3/8"	35	15	17	9	24
AUX68-3814	3/8"	1/4"	35	15	17	9	19
AUX68-3812	3/8"	1/2"	37	15	20	9	27
AUX68-1218	1/2"	1/8"	26	20	11	8.5	22
AUX68-1212	1/2"	1/2"	43	20	23	11.1	27
AUX68-1214	1/2"	1/4"	27	20	17	13	24
AUX68-1238	1/2"	3/8"	38	20	17	12	24
AUX68-1234	1/2"	3/4"	48	20	22.5	12	32
AUX68-3434	3/4"	3/4"	48	20	22.5	18	32
AUX68-3438	3/4"	3/8"	28	20	17	15	27
AUX68-3412	3/4"	1/2"	42	20	20	15	27
AUX68-3411	3/4"	1"	50	20	25	18	41
AUX68-1111	1"	1"	57	25	25	21	41
AUX68-1154	1"	1.1/4"	57	25	27	21	55
AUX68-1112	1"	1/2"	34	25	20	19	36
AUX68-1134	1"	3/4"	54	25	22.5	21	36
AUX68-5454	1.1/4"	1.1/4"	57.5	25.5	27	30	55
AUX68-5434	1.1/4"	3/4"	40	25.5	22.5	24.2	46
AUX68-5411	1.1/4"	1"	40	25.5	25	30.6	46
AUX68-5432	1.1/4"	1.1/2"	62.5	25.5	27.5	30	55
AUX68-3232	1.1/2"	1.1/2"	63	26	27.5	36	55
AUX68-3254	1.1/2"	1.1/4"	56	26	27	36	55
AUX68-3211	1.1/2"	1"	40	26	25	30.6	55