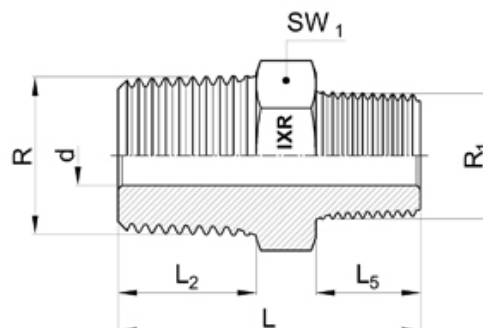


## AUX67..RIDOTTO - NIPPLO ESAG. RID. M/M GAS CONICO



### Descrizione:

**Filettatura:** Gas Conica UNI EN 10226  
: 2006 ( Ex UNI / ISO 7/1)

Vedi anche codice AUX67..

### Caratteristiche tecniche:

Codice di ordinazione	R	R1	L	L2	L5	d	SW1
AUX6702	1/4"	1/8"	29	13.5	9.5	4	14
AUX6704	3/8"	1/4"	35.5	14	13.5	6	19
AUX6706	1/2"	3/8"	40.5	18.5	14	8	22
AUX6708	3/4"	1/2"	47.5	19	18.5	11.1	27
AUX6710	1"	3/4"	51	22	19	17	36
AUX6712	1.1/4"	1"	60	24	22	22.5	46
AUX6714	1.1/2"	1.1/4"	65	25	24	28.6	50
AUX6716	2"	1.1/2"	70	28	25	33.3	65
AUX6718	1/2"	1/4"	40	18.5	13.5	6	22
AUX6719	1"	1/2"	50.5	22	18.5	11.1	36
AUX6720	3/4"	3/8"	43	19	14	8	27
AUX6721	1.1/4"	3/4"	57	24	19	17	46
AUX6722	2"	1"	67	28	22	22.5	65
AUX6723	1"	3/8"	46	22	14	8	36
AUX6724	3/8"	1/8"	31.5	14	9.5	4	19
AUX6730	1.1/2"	3/4"	60	25	19	17	50
AUX6731	1.1/2"	1"	63	25	22	22.5	50
AUX6732	2"	1.1/4"	69	28	24	28.6	65
AUX6733	3/4"	1/4"	42.5	19	13.5	6	27